



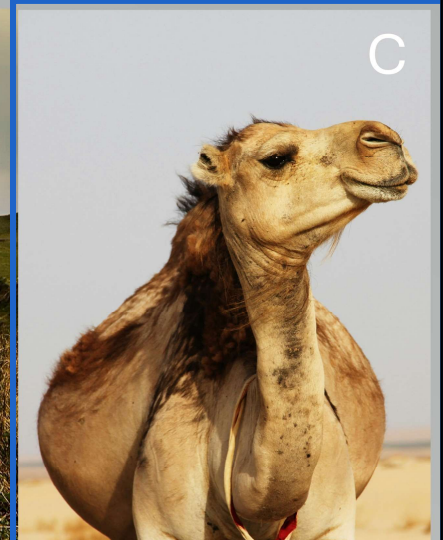
ALPACA'S WHAT'S SO SPECIAL?

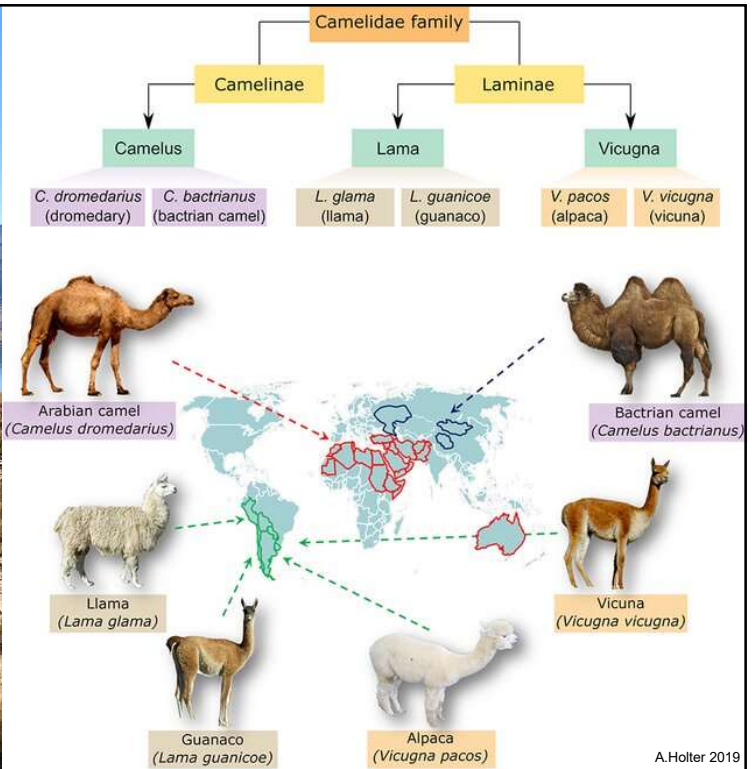
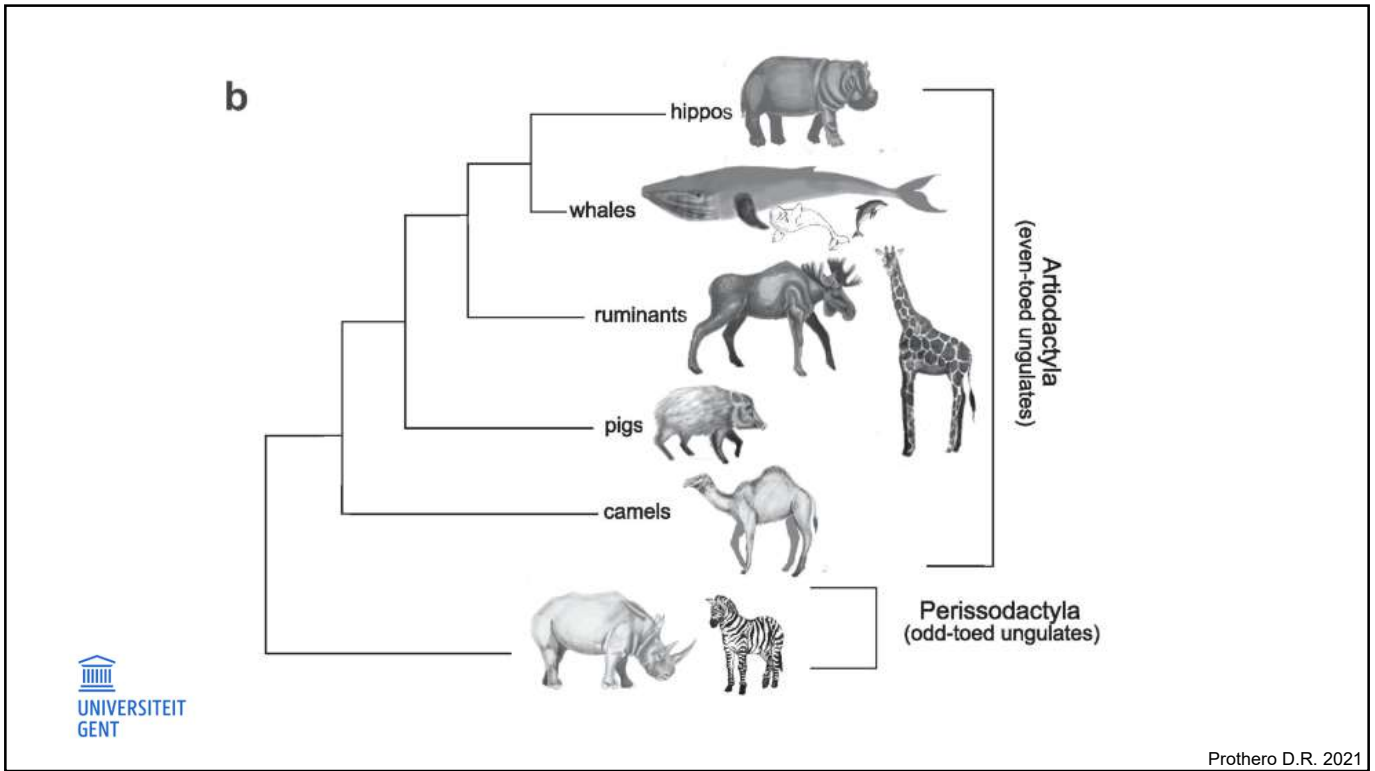
Justine Clinquart

6/11/2024



AAN WELK DIER IS DE ALPACA HET MEEST
VERWANT?





ALPACA, LLAMA, COMO SE LLAMA?



50-80 kg



110-200 kg



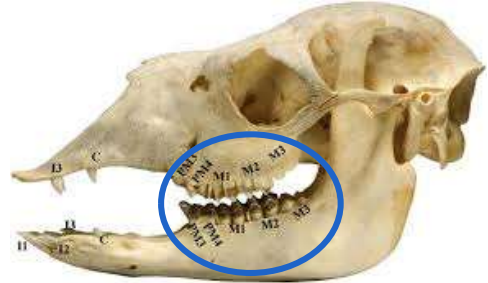
<https://ajaibdananeh.blogspot.com>

HOEVEEL (VOORSTE) SNIJTANDEN HEEFT EEN ALPACA?





Alpacadentist.com.eu



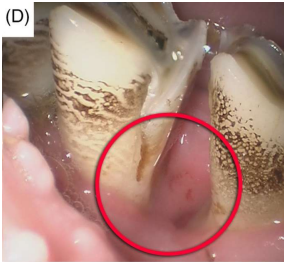
A. Niehaus (2007)



Ruimte tussen tanden
(Diastema)



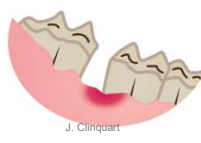
J. Cinquart



K. Proost (2020)



Ontsteking tandvlees
(Periodontitis)



J. Cinquart



K. Proost (2020)

Ontsteking wortel
(peri-apicale infectie)



J. Cinquart

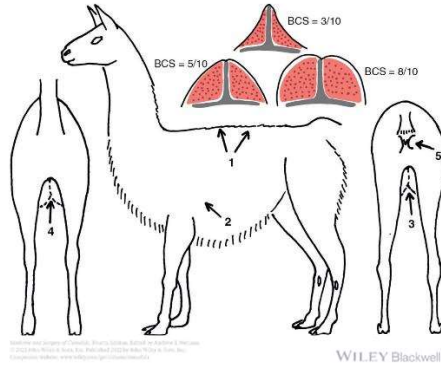
Tandabces



A. Niehaus (2009)



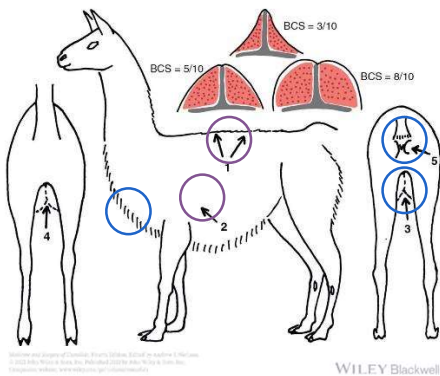
Preventie/detectie tandproblemen



Palpatie kaaktakken



K. Proost (2020) J vet intern Med 34



Regio net voor lumbale wervels & ribben

Regio vetdepots >3/5 :

periaanaal

Inguinaal

“cossum”

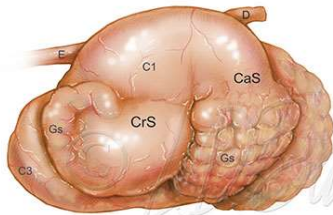


L.W Johnson (2014) Llama and alpaca care, A. Niehaus (2022) Med & Surg of Camelids

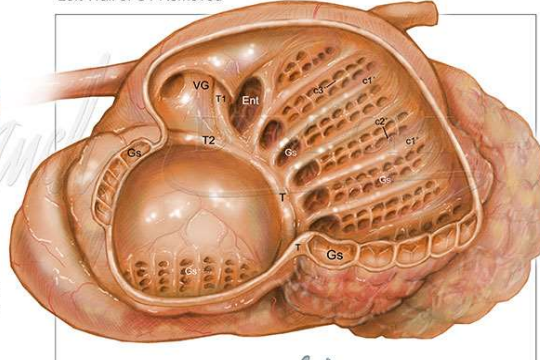
HOEVEEL MAGEN HEEFT EEN ALPACA?



Left Lateral View

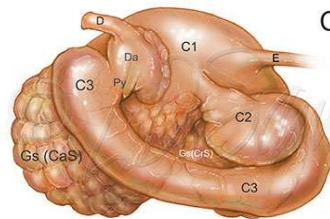


Left Wall of C1 Removed

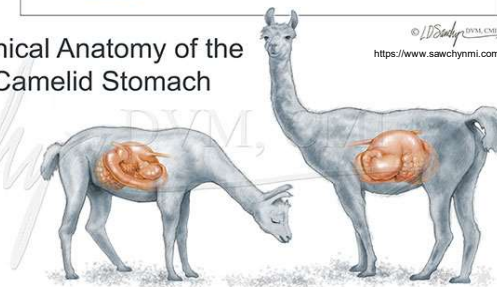


- | | | | |
|-----|---------------------|-----|------------------------|
| C1 | Compartment 1 | Py | Pylorus |
| C2 | Compartment 2 | Da | Duodenal ampulla |
| C3 | Compartment 3 | D | Duodenum |
| E | Esophagus | T | Transverse pillar |
| CrS | Cranial Sac, C1 | T1 | Caudal limb of pillar |
| CaS | Caudal Sac, C1 | T2 | Cranial limb of pillar |
| Gs | Glandular sacculles | VG | Ventricular groove |
| c | 1', 2', 3' Crests | Ent | Entrance to C2 |

Clinical Anatomy of the Camelid Stomach

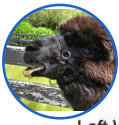


Right Lateral View

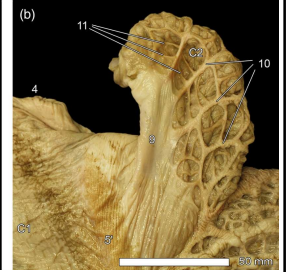
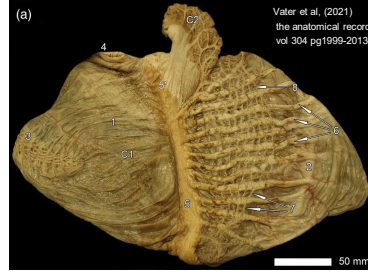
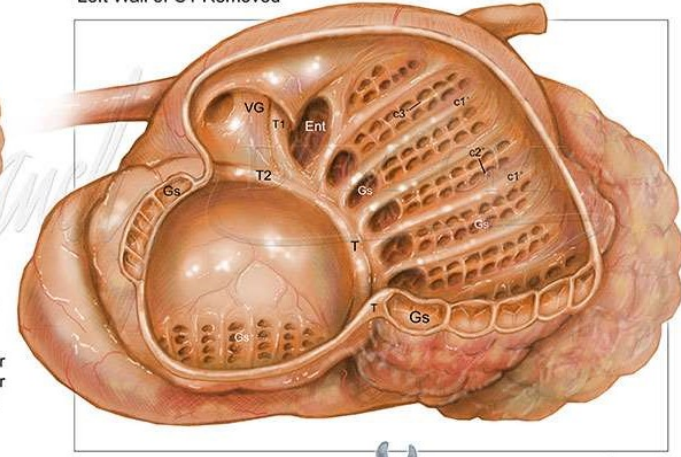


© J. S. Sawyer, DVM, MS, PhD
<https://www.sawchynmi.com>

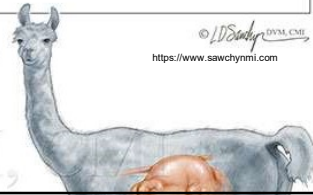




Left Wall of C1 Removed

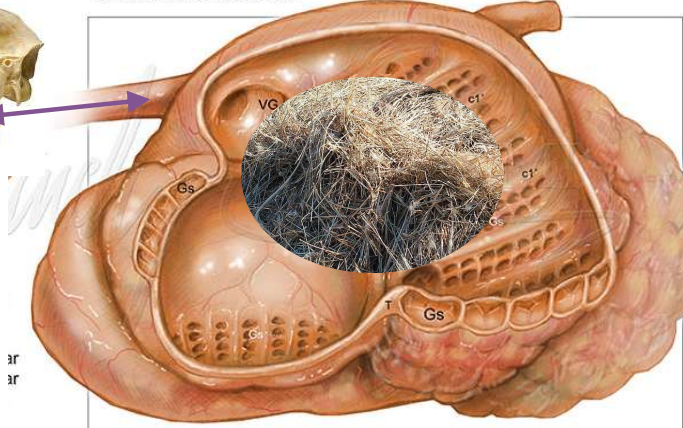


Clinical Anatomy of the Camelid Stomach

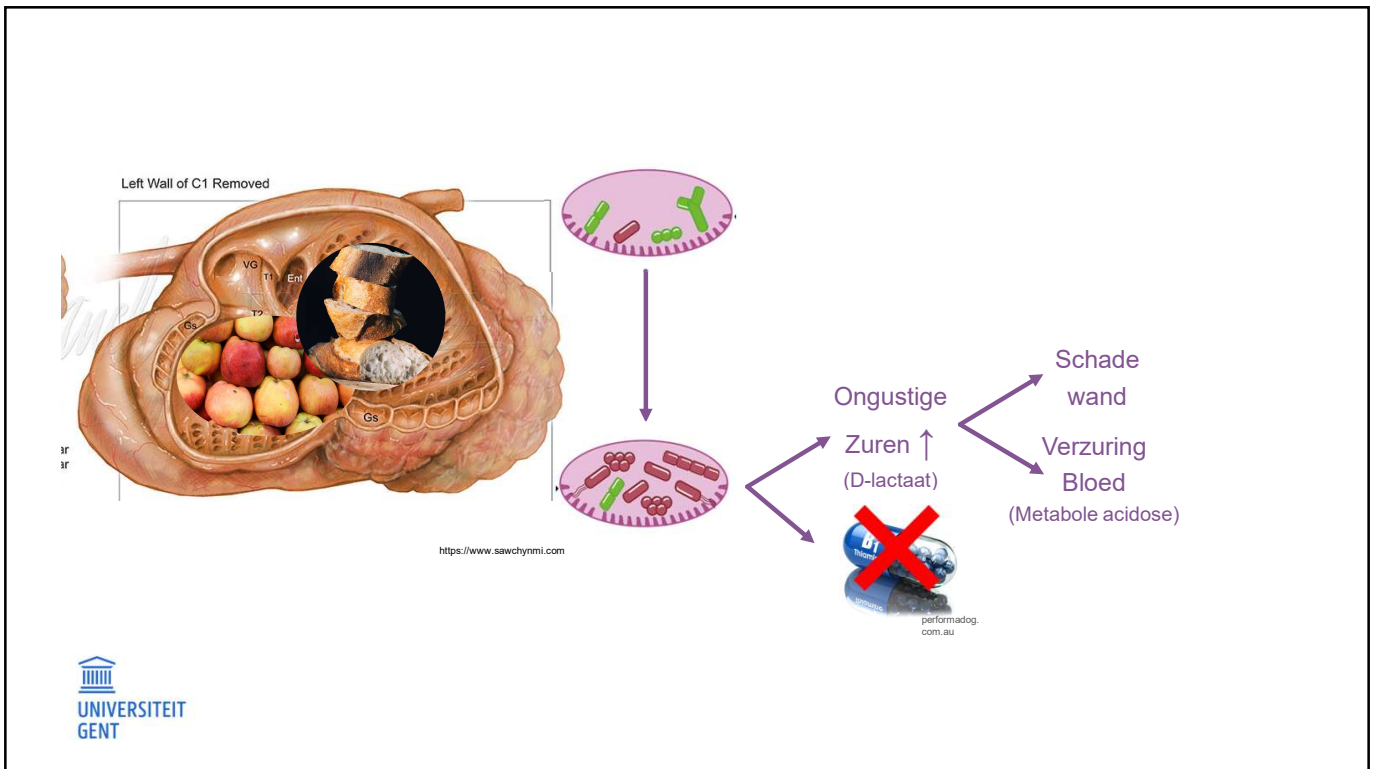
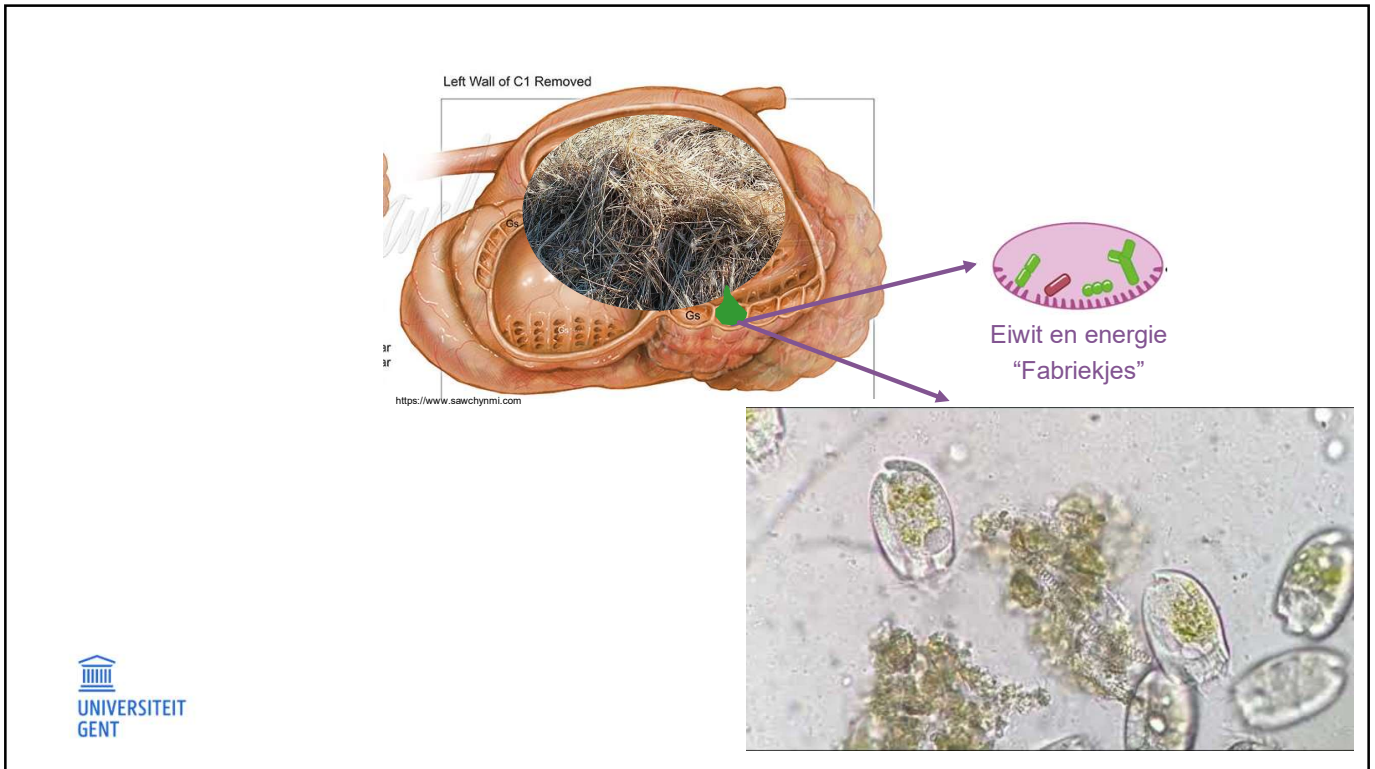


© D. Sawchynski DVM, CMA
<https://www.sawchynski.com>

Left Wall of C1 Removed



<https://www.sawchynski.com>



Clinical Anatomy of the Camelid Stomach

Right Lateral View

Maagzuur

UNIVERSITEIT GENT OpenStax College

(b)

10 mm

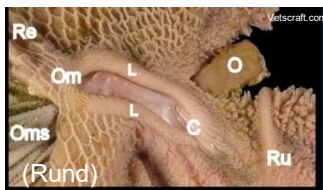
Vater et al, (2021) the anatomical record vol 304 pg1999-2013

Reflux vanuit de darm

Inhoud C1 verzuring

UNIVERSITEIT GENT

In welke maag komt de melk terecht bij een cria/alpacaveulen?

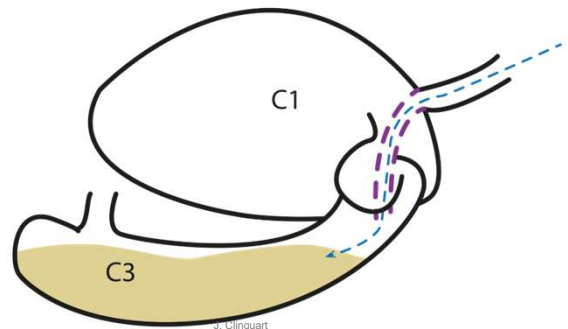
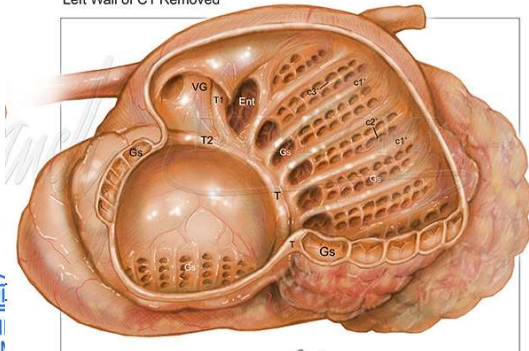


<https://www.sawchynmi.com>



WILEY-Blackwell
Medicine and Surgery of Camelids, Fourth Edition, Edited by Andrew J. Niehaus.
© 2022 John Wiley & Sons, Inc. Published 2022 by John Wiley & Sons, Inc.

Left Wall of C1 Removed



J. Clinquant

C.Cebra (2014), G.Shepherd (1993)

The diagram on the left shows a normal alpaca's digestive system. The rumen (C1) is empty, and the cecum (C3) contains a small amount of milk. A dashed blue arrow indicates the normal flow of milk from the cecum to the rumen. To the right is a photo of a white alpaca drinking from a clear plastic bottle with a yellow cap. The URL <http://www.fowberry-alpacas.com> is visible in the top right of the photo.

J. Clinquart

UNIVERSITEIT GENT

C.Cebra (2014), G.Shepherd (1993)

The diagram on the left shows a normal alpaca's digestive system, identical to the one in the first slide. To the right is the same photo of the alpaca drinking from a bottle. Below the photo is a purple arrow pointing to the right, indicating a transition to a forced-feeding state.

J. Clinquart

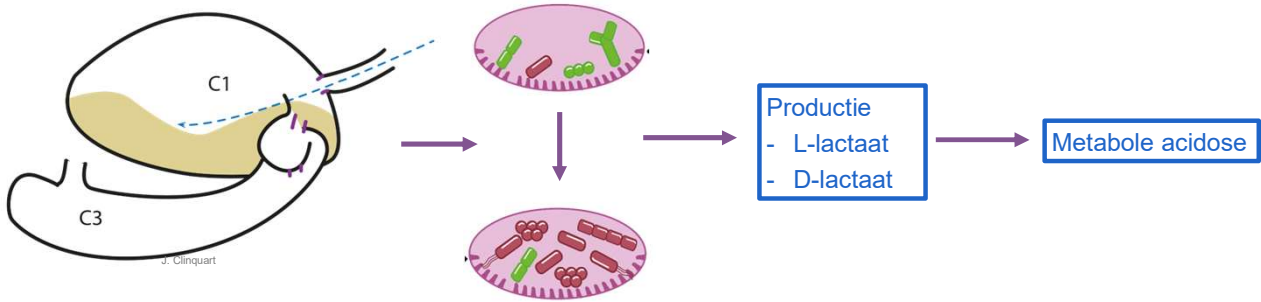
Geforceerd
Koud
Teveel

J. Clinquart

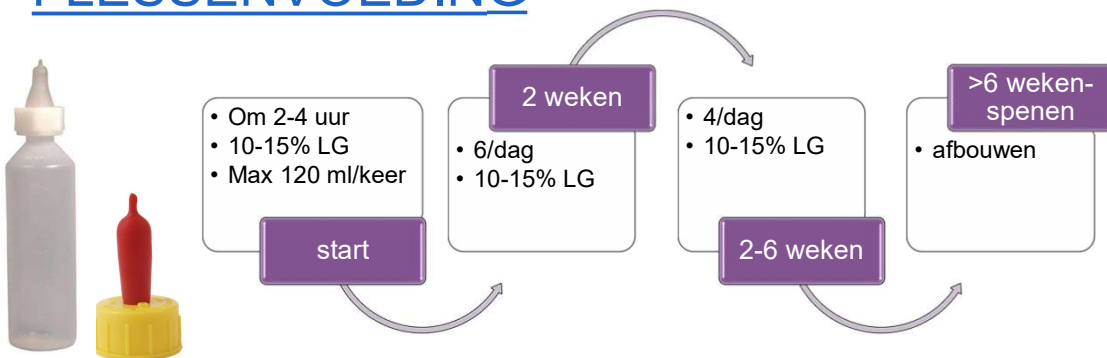
UNIVERSITEIT GENT

C.Cebra (2014), G.Shepherd (1993)

C1 ACIDOSE



FLESSENVOEDING

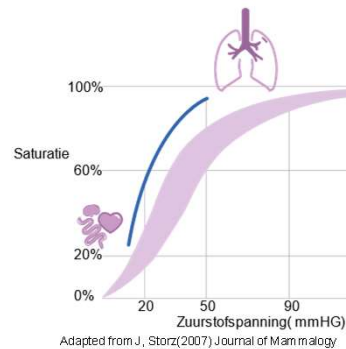
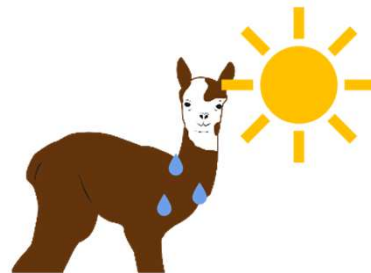
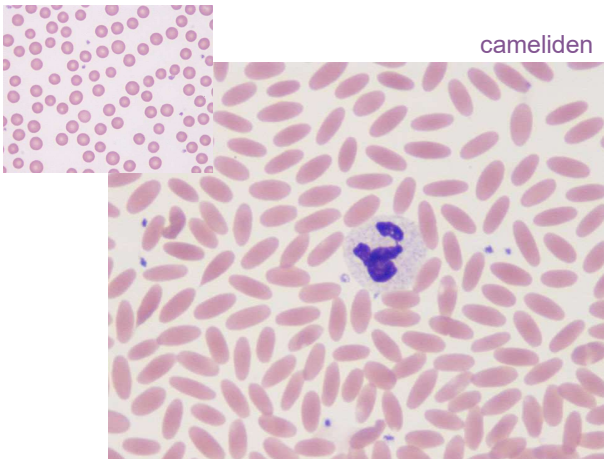


- Belangrijk**
- kunstmelk: juiste concentratie?
 - Geitenmelk: paratbcvrij?
 - Lichaamstemperatuur
 - Hygiëne
 - Gewicht opvolgen

Wat zorgt ervoor dat alpaca's in staat zijn om in de hoge gebergtes te overleven?



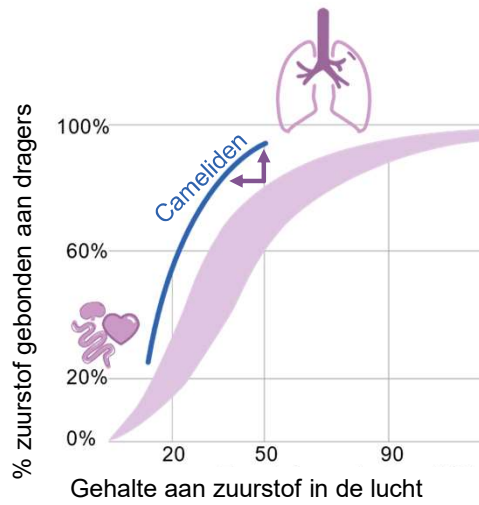
"Klassieke huisdieren"



Aangepaste zuurstofdragers (hemoglobine)



Er was eens het leven, A. Barillé (1986)



Longen: Meer opname van zuurstof uit lucht met minder zuurstof
→ Zeer efficiënt !

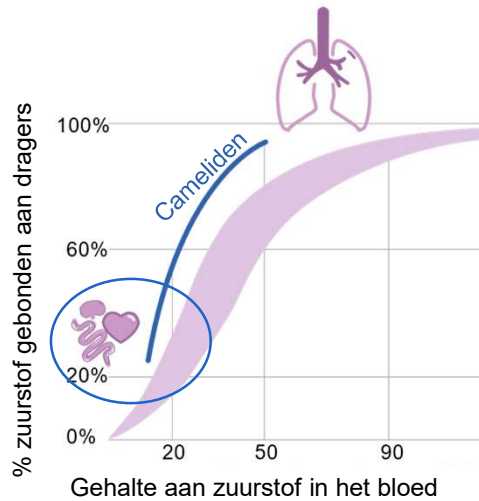
Adapted from J. Storz(2007) Journal of Mammalogy



Aangepaste zuurstofdragers (hemoglobine)



Er was eens het leven, A. Barillé (1986)



Organen: ongeveer = andere dieren
Even grote afgifte zuurstof

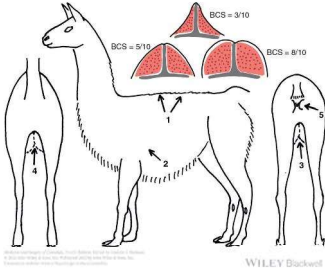
Adapted from J. Storz(2007) Journal of Mammalogy



The image is a composite of several elements. On the left is a graph with 'Saturatie' on the y-axis (0%, 20%, 60%, 100%) and 'Zuurstofspanning (mmHG)' on the x-axis (20, 50, 90). A blue curve rises steeply from (20, 0) to (50, 100), while a purple curve rises more gradually. Above the graph is a diagram of lungs, and below it is a diagram of a heart. An arrow points from the graph to a photograph of a llama in a green mountain landscape. Another arrow points from the graph to a syringe containing a small amount of red liquid. Below the syringe is a close-up of a llama's eye. To the right of the eye is a photograph of a llama in a feed trough with the text 'No drama llama' overlaid. In the bottom left corner is the logo for 'UNIVERSITEIT GENT'.

The diagram is titled 'Parasites of Llamas'. It features a line drawing of a llama with its internal organs highlighted. Labels point to specific areas: 'Cecum and Colon' (listing *Oesophagostomum* and *Trichuris*), 'Small Intestine' (listing *Capillaria*, *Trichostrongylus*, *Cooperia*, *Nematodirus*, and *Strongylus*), and 'Stomach Compartment Three' (listing *Camelostomum*, *Haemonchus*, and *Ostertagia*). To the left of the diagram is a photograph of a llama in a dry, grassy field with mountains in the background. Below the diagram is the caption: 'Figure 7.55 Predilection sites of common parasites in camelids.' In the bottom left corner is the logo for 'UNIVERSITEIT GENT'. In the bottom right corner is the logo for 'WILEY Blackwell'. At the very bottom, there is a copyright notice: 'Medicine and Surgery of Camelids, Fourth Edition, Edited by Andrew J. Niehaus. © 2022 John Wiley & Sons, Inc. Published 2022 by John Wiley & Sons, Inc. Companion website: www.wiley.com/go/niehaus/camelids'.

Kuddebeheer



+Rotatie



Gewicht!



B.E. Storey (2017) vet parasit 243

Wat hebben haaien en kameelachtigen gemeenschappelijk?



Ga naar wooclap.com en gebruik de code **TXXMSB**

Wat hebben haaien en kameelachtigen gemeenschappelijk?

Antistoffen
Nanobodies

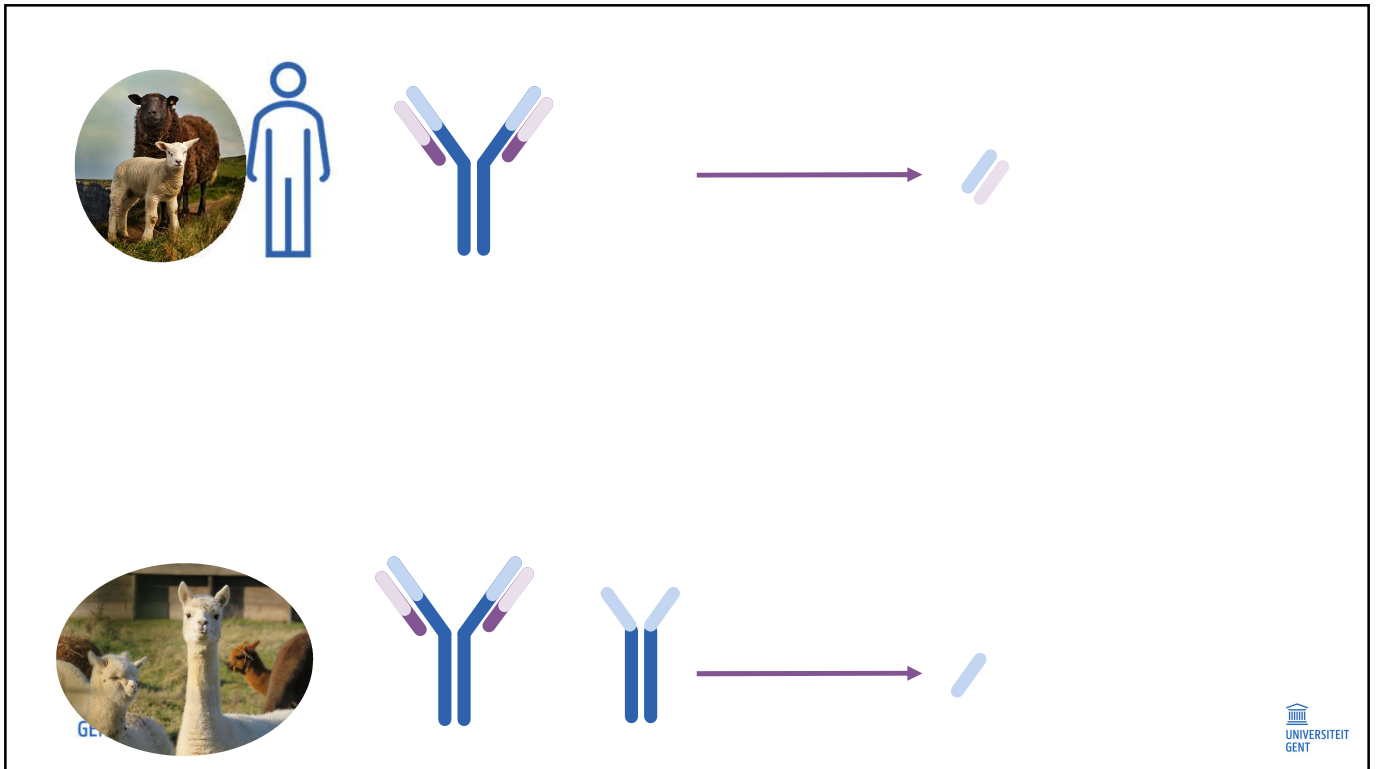
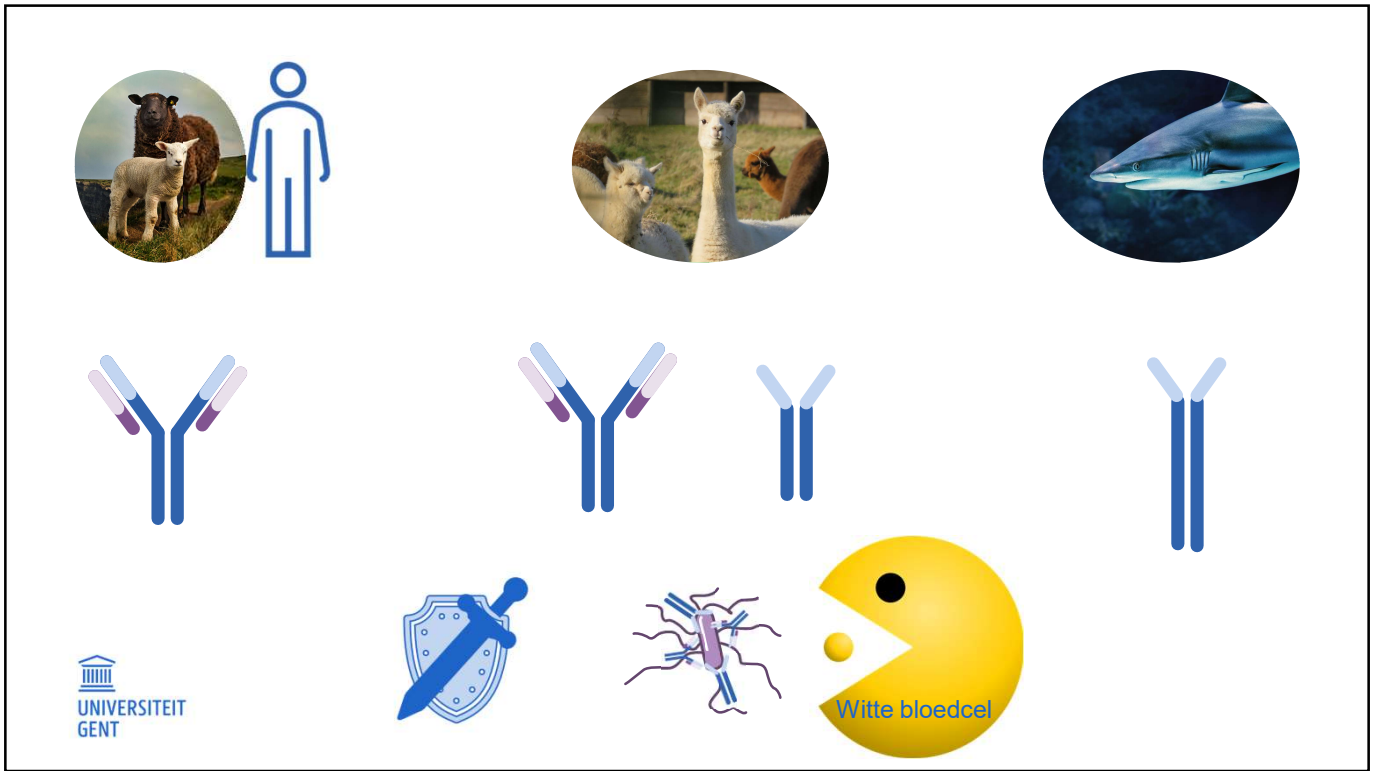
Heavy chain only antistoffen
Nanobody's
Nano bodies
Longinhoud

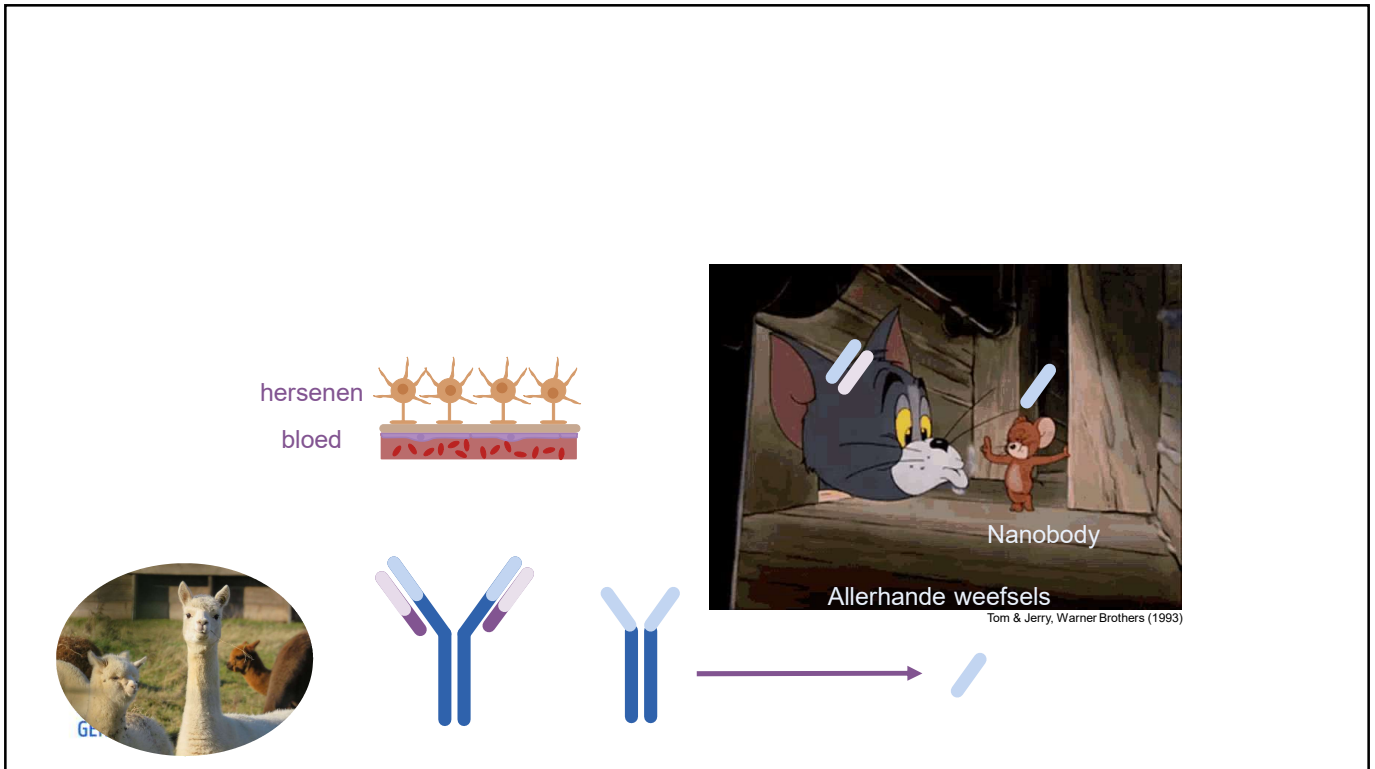
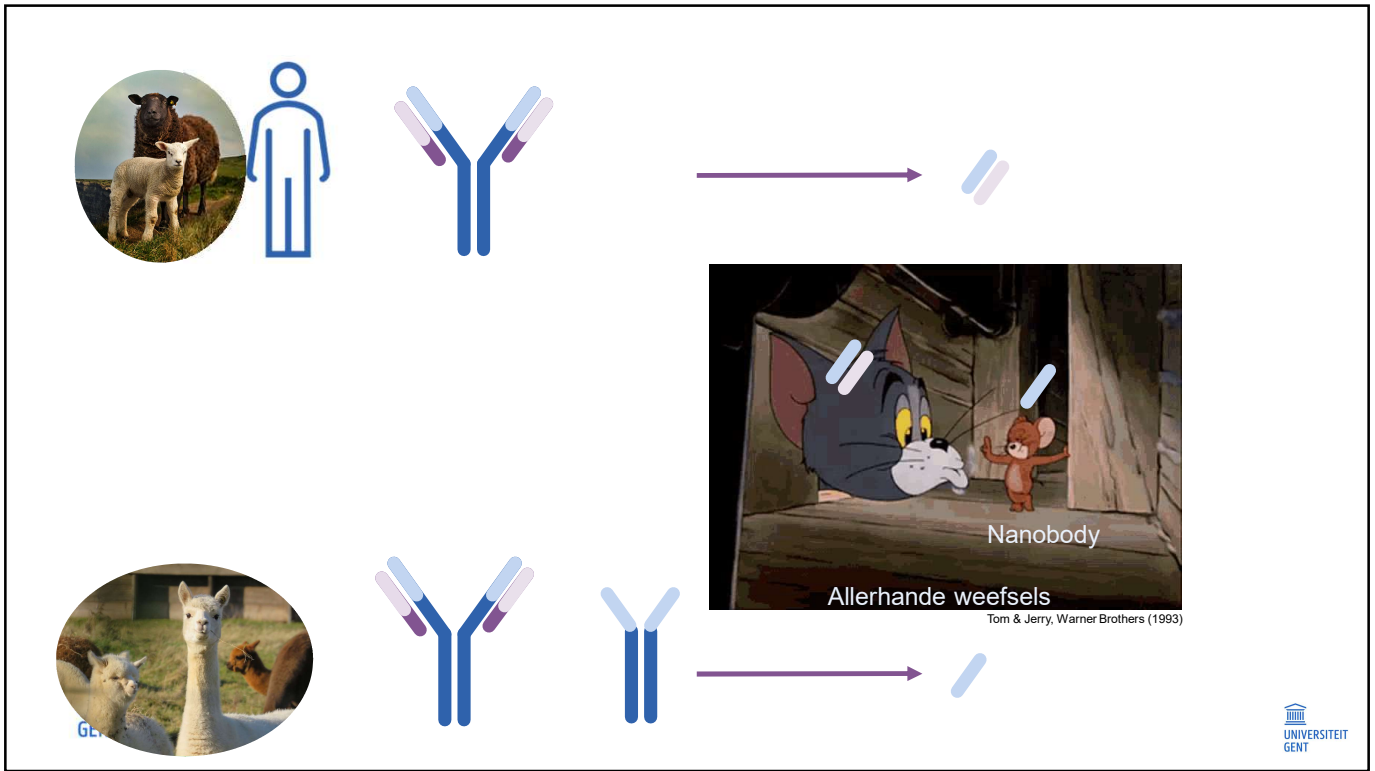
Rode bloedcellen
Kraakbeen
Kieuwen
Vinnen
Het is een dier
Schubben

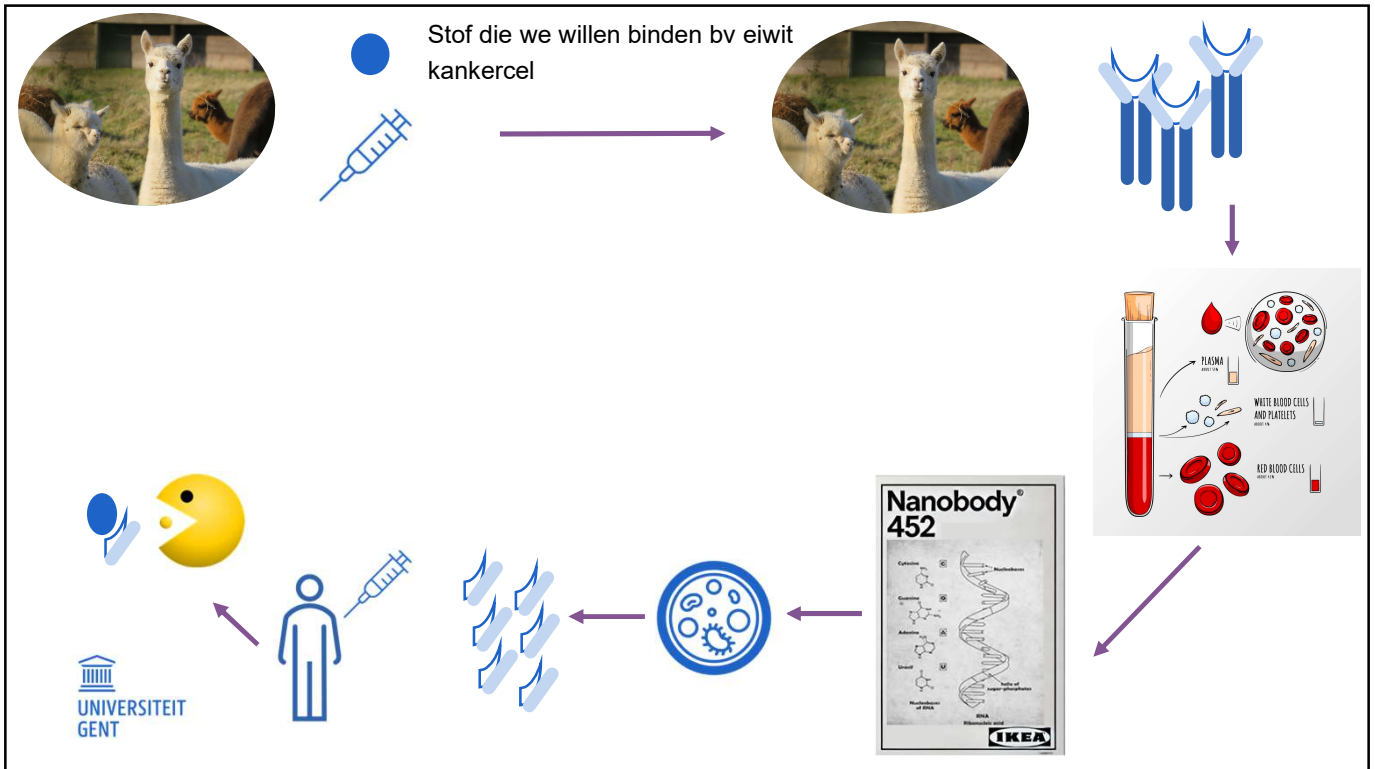
Klik op het geprojecteerd scherm om de vraag te activeren

wooclap









"We were teaching. Just before summer, we still had to teach VUB students how to subtract antibodies from blood, to be able to study them. My wife launched the ingenious idea to use dromedary blood. The students thought we had gone mad (laughs). But the result stunned us."

Raymond Hammers

UNIVERSITEIT GENT

Met welk dier komt de nageboorte
overeen?



A



B



C

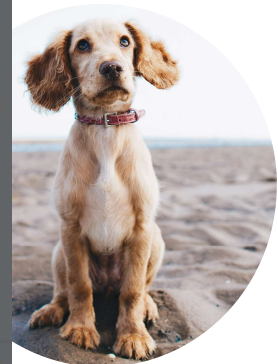
Met welk dier komt de nageboorte
overeen?



A



B



C

Diagram illustrating the stages of placental development in a shagbark ridge. The panels show the transition from maternal blood (Moeder) to a fetal membrane (Foetus). The stages are labeled A, B, C, and D. A drawing of a shagbark ridge is shown with a placenta attached to its back.

Labels: Foetus, Moeder, shagbarkridge

UNIVERSITEIT GENT

41

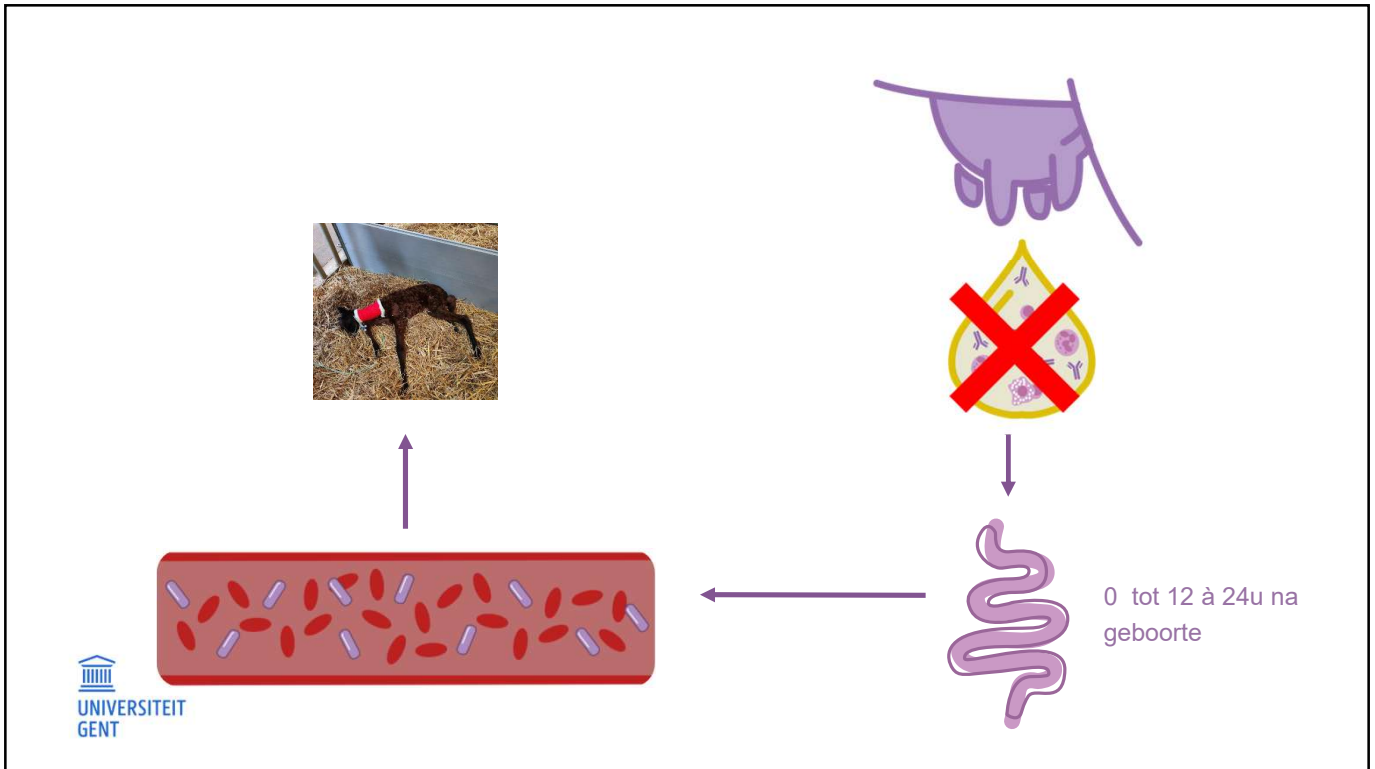
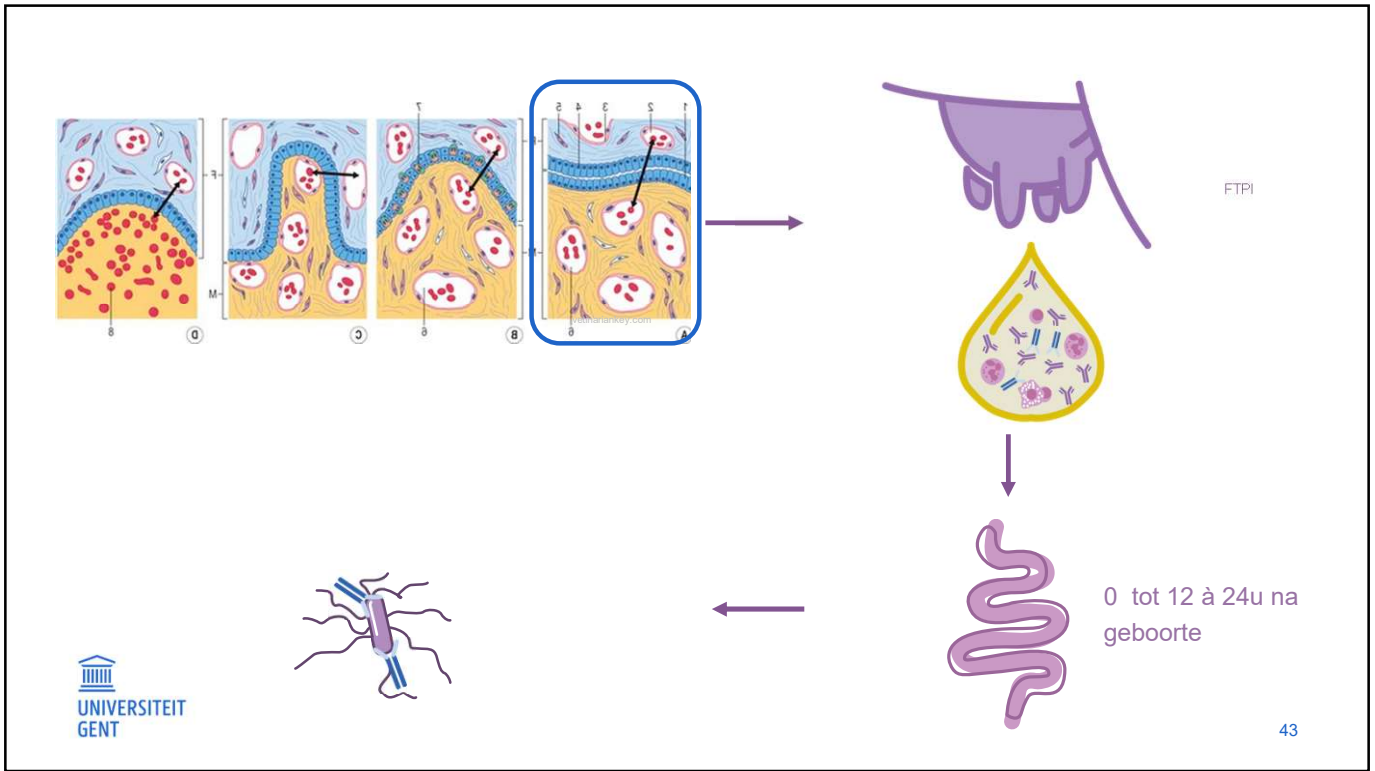
Diagram illustrating the stages of placental development in a shagbark ridge. The panels show the transition from maternal blood (Moeder) to a fetal membrane (Foetus). The stages are labeled A, B, C, and D. A drawing of a hand holding a placenta is shown, followed by a teardrop containing a parasite, and a drawing of a parasite.

Labels: Foetus, Moeder, shagbarkridge

UNIVERSITEIT GENT

0 tot 12 à 24u na geboorte

42



Hoeveel spenen heeft een alpaca?



ANDERE WEETJES

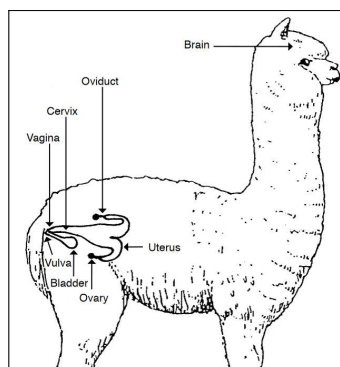
Geen spontane eisprong maar
uitgelokt bij dekking



Te Korito Alpacas



Foetus bevindt zich bijna altijd in
de linkerbaarmoederhoorn



Australian Alpaca

Epidermaal membraan (= 4^{de} vlies)



WILEY Blackwell
© 2012 John Wiley & Sons, Inc. Published 2012 by John Wiley & Sons, Inc.



Justine Clinquart
Dierenarts & PhD student
vakgroep interne geneeskunde, voortplanting en
populatiegeneeskunde – Herkauwerkliniek

E Justine.Clinquart@ugent.be
T 0498789724 (Kliniek inwendige ziekten:
Herkauwers)

